



**YORKSHIRE DALES**  
National Park

## Malham Walks

### Malham Cove

**1 mile (1.6 km), 25 mins each way**

●●●● Follow gold route

The 70 metre (230ft) high cliff of white limestone has amazed visitors for centuries.

### Janet's Foss

**1.2 miles (2 km), 40 mins each way**

●●●● Follow blue route

Found in a magical woodland setting, this waterfall is named after the queen of the fairies.

### Gordale Scar

**1.8 miles (2.9 km), 50 mins each way**

●●●● Follow blue route to Janet's Foss

●●●● Then red route to Gordale Scar

Inspiring writers and artists for centuries, this hidden gorge has been carved deeper and deeper by the meltwater of successive ice ages.

### Malham Landscape Trail

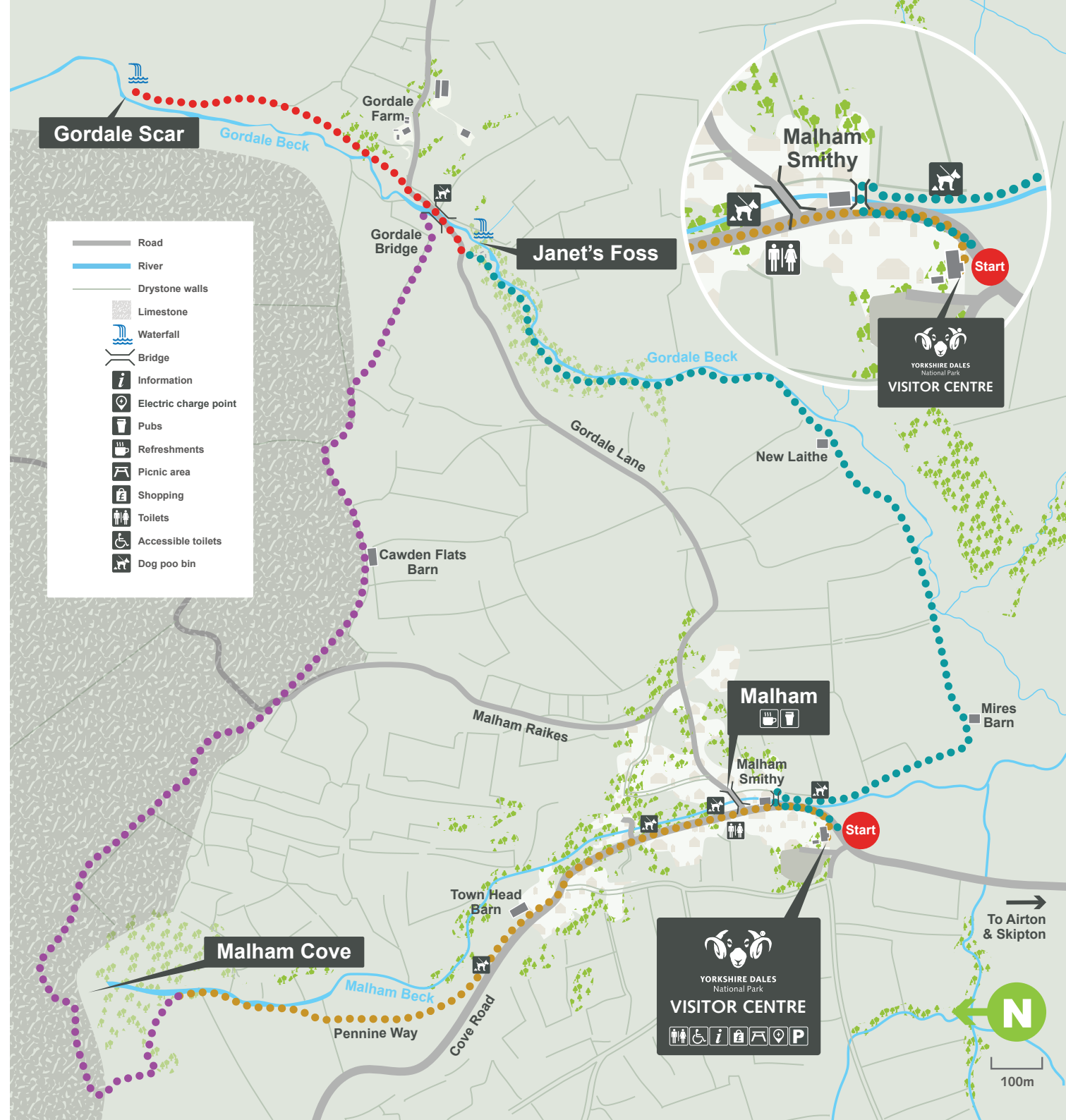
**4.5 miles (7.2 km), 3 hours circular**

●●●● Follow blue route to Janet's Foss

●●●● Then red route until Gordale Scar

●●●● Then purple route to Malham Cove

●●●● Then gold route for return to the Visitor Centre.





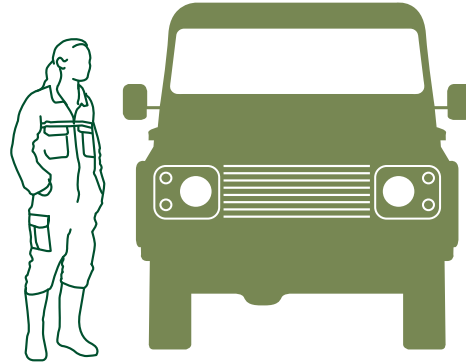
**YORKSHIRE DALES**  
National Park

# To enjoy your day it's important to follow the rules

**RESPECT THE LAND**

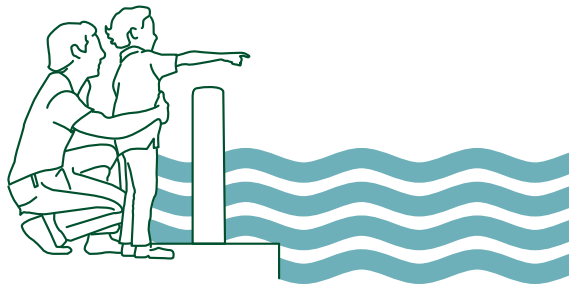
**RESPECT THE COMMUNITY**

**RESPECT EACH OTHER**



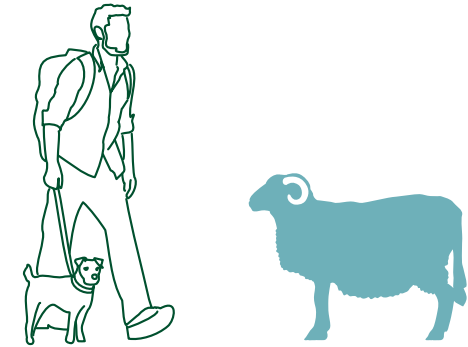
## **Respect The Land**

Remember much of the land is privately owned. Respect the life and work of people who live here.



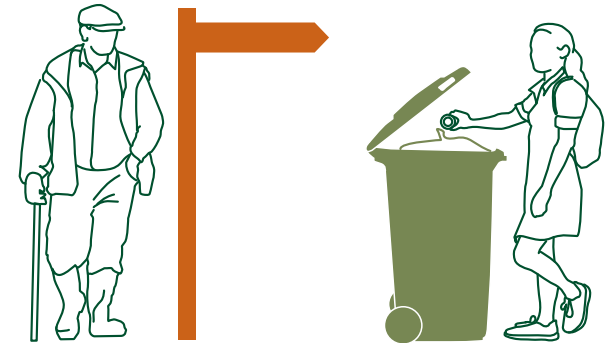
## **Be Water Aware**

Rivers and lakes can be extremely cold, deep and difficult to get out of. There may also be hidden hazards below the surface. Always check before you enter. If you find someone in difficulty in water in the Dales, call 999 and ask for Fire & Rescue.



## **Walk Dogs Safely**

Pregnant sheep get stressed and can miscarry if they start running when dogs are near. Keep your dog on a lead from November and throughout lambing time.



## **Respect The Community**

Keep to rights of way, especially through fields and meadows, and leave gates as you find them.

## **Take Your Litter Home**

Leave no trace. Take nothing but photos, leave nothing but footprints.